

# Smoky eyed

*The sex-kitten classic is alive and well. Here are the rules, tools, dos and don'ts.*

Whatever their size or shape, your eyes are the first thing most people notice about you. Getting frocked up for a date night or a girly get-together?

The attention-grabbing smoky eye is all you need to make you feel glam.

## RULE 1 CHOOSE YOUR COLOUR

Tobi Henney, L'Oréal Paris Makeup Director for Australia, says the perfect smoky eye comes down to following a few golden rules: choosing the right eye shadow tones for your eye colour, and blending (...and blending and blending!). Black can be harsh on blondes – charcoal, chocolate or deep plum are softer alternatives.

## RULE 2 USE A FOOLPROOF FORMULA

Sylvie Hutchings, Founder of SCOUT Cosmetics, recommends sweeping a nude base colour from the eyebrow down to the eyelid. "Then, using a thick black eyeliner pencil draw a line from the outer corner to the inner corner of the eye. Repeat on the bottom under your lower lashes, keeping the pencil as close to the lashes as possible," says Sylvie. Then, use your choice of dark eye shadow and blend it over the eyelid. Finally, blend, blend, blend over the top and bottom lashes – smudge is ideal when creating a smoky eye.

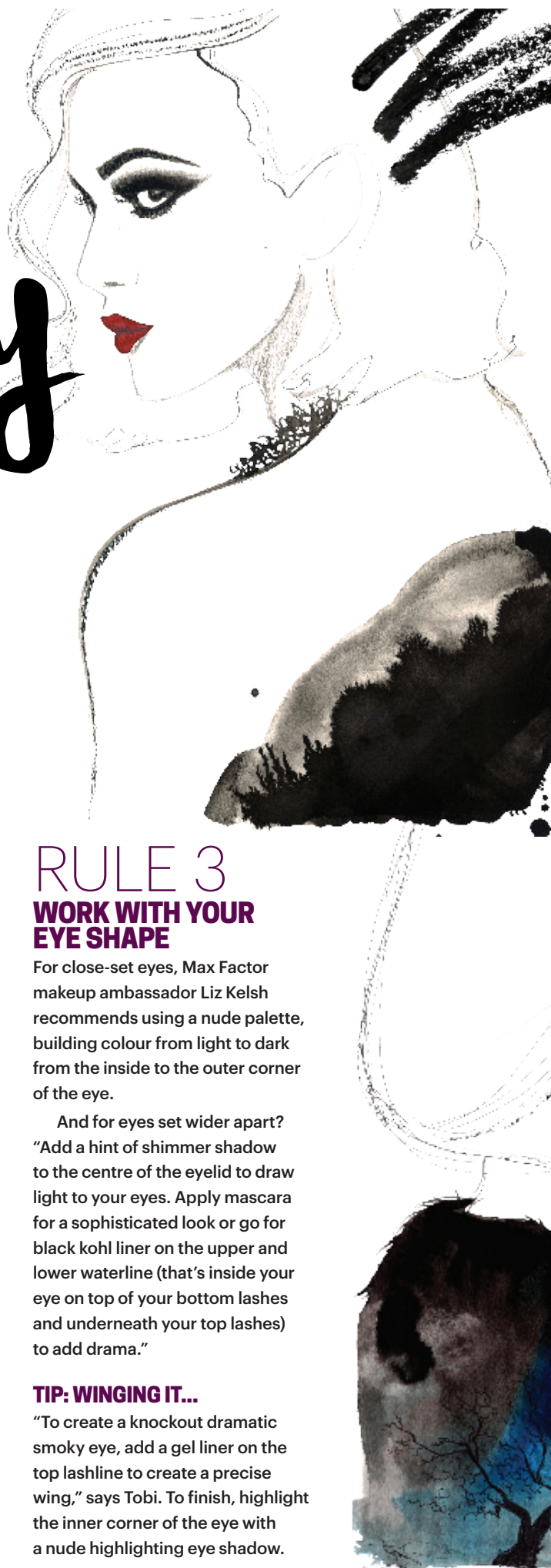
## RULE 3 WORK WITH YOUR EYE SHAPE

For close-set eyes, Max Factor makeup ambassador Liz Kelsh recommends using a nude palette, building colour from light to dark from the inside to the outer corner of the eye.

And for eyes set wider apart? "Add a hint of shimmer shadow to the centre of the eyelid to draw light to your eyes. Apply mascara for a sophisticated look or go for black kohl liner on the upper and lower waterline (that's inside your eye on top of your bottom lashes and underneath your top lashes) to add drama."

### TIP: WINGING IT...

"To create a knockout dramatic smoky eye, add a gel liner on the top lashline to create a precise wing," says Tobi. To finish, highlight the inner corner of the eye with a nude highlighting eye shadow.



66

A metallic finish or a little colour like navy or deep purple is right on trend. Try matte cranberry, plum and dark blue tones to update your smoky eye.



You'll need a good palette such as Max Factor Smokey Eye Drama Kit, \$20.95.

## Tools of the trade



Try the easy-to-blend SCOUT Cosmetics Mineral Eyeliner Pencil, \$24.95, or for a winged effect, L'Oréal Paris Super Liner Superstar, \$24.95.



For colour, try very on-trend SCOUT Cosmetics Mineral Shadow Intensive in Lilac Wine, \$29.95.



Max Factor Velvet Volume False Lash Effect Mascara, \$27.95, creates intense volume while Physicians Formula Argan Wear Ultra-Nourishing Argan Oil Mascara, \$24.95, is ideal for sensitive eyes. ■

### DOS

- Apply your eye makeup before foundation so you can clean up any mistakes without removing anything else.

- Put eyeliner on the inner lashline (waterline) both top and bottom for an extra-sultry look.

- Use a creamy white pencil on the waterline if you want to open up your eyes more.

- Add a pop of colour or sparkle on a smoky eye to glam it up - dab it in the middle of the eyelid or in the inner corner of the eye.

### DON'TS

- Avoid using more than three colours so your eyelids don't look too product-heavy.

- Never apply eye cream before doing eye makeup - the colour will slide off.

- Don't go overboard with the rest of your look - a little lip gloss or a hint of blush is all you need.

Words: Eva-Maria Bobbert Photography: Getty Images.